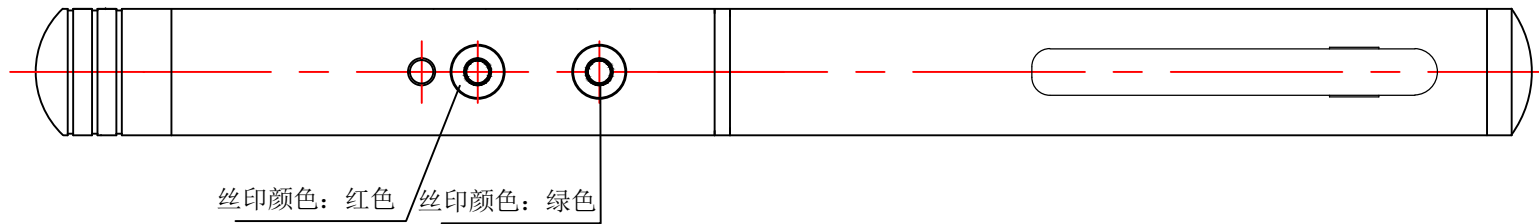
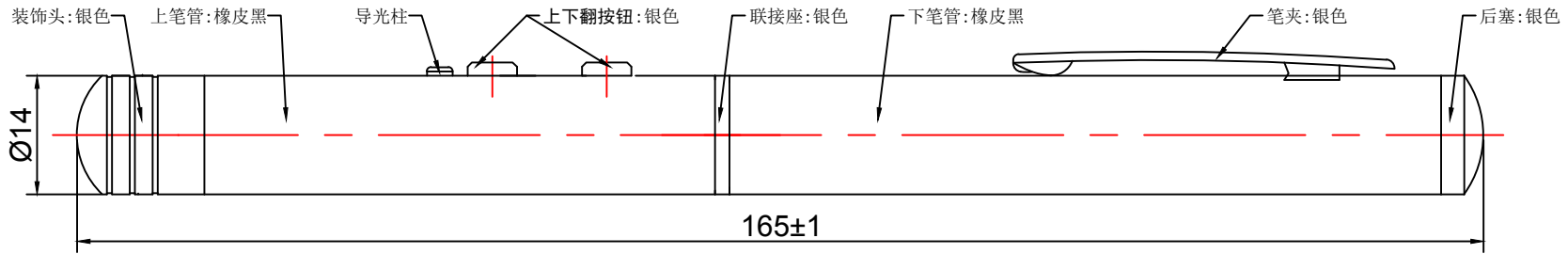


1 2 3 4 5 6 7 8 9 10

Complies with the Requirements

(遵从需求)

EU RoHS PAHs Halogen Phthalate PFOS

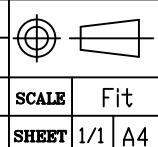


RED LASER MODULE SPECIFICATION:				
PARAMETER	MIN.	TYPICAL	MAX.	UNIT
OPTICAL POWER(AT 14mm)	0.6	0.8	0.9	mW
OPERATING VOLTAGE	-	3.0	-	V
OPERATING CURRENT	-	-	40	mA
WAVE LENGTH AT PEAK EMISSION	640	650	660	nM
OPERATING TEMP. RANGE	0	25	40	°C
STORAGE TEMP. RANGE	-10	-	50	°C
BEAM SPOT SIZE AT 15M(25±0.5°C)	-	-	18X18	mm
LASER BEAM DEFLECTION ANGLE	-	-	±3'	DEGREE

GREEN LASER MODULE SPECIFICATION:					
SYMBOL	PARAMETER	MIN	TYPICAL	MAX	UNIT
PO	Pulse OPTICAL POWER(At 25°C)	0.5	-	0.9	mW
IOP	OPERATING CURRENT(At 25°C)	-	-	100	mA
VOP	OPERATING VOLTAGE	-	3.0	-	V
λP	WAVE LENGTH AT PEAK EMISSION	495	505	515	nM
TOP	OPERATING TEMP. RANGE	0	25	40	°C
TSTG	STORAGE TEMP. RANGE	-10	-	+50	°C
SIZE	MAXIMUM BEAM SPOT AT 15M (At 25°C)	-	-	20x20	mm
NOTE	LD Drive Circuitry: APC				



File Name	GL-1-RL1	DESIGNED BY	陈友军	TOLERANCE	±0.5
	PART NAME	成品规格表	CHECKED BY		MATERIAL
			APPROVED BY		FINISH
		PART NO.	RELEASE DATE	19.4.1	UNIT



NO.	REV. DATE	REVISION NOTE	SIGNATURE	CHECK
REVISION CHART				

1 2 3 4 5 6 7 8 9 10